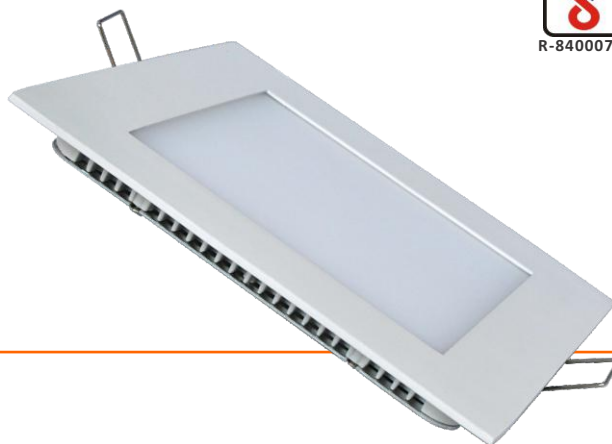


# 22W LED PANEL LIGHT



## AREAS OF APPLICATION

Corporate Offices  
Bank & ATM outlets  
Hospital lighting  
Modern works spaces  
Showroom & Mall Lighting  
House lightings  
Airport lounges

## PRODUCT SPECIFICATION :

**Housing** : Housing made up of high heating conductive pure aluminum material

**Lamp Efficacy** : >100 lumen/Watt

**System Management** : Multiple LEDs are used in series - parallel cluster

**Control Gear** : CC-CV Control driver with efficiency >90%, current regulator for each cluster

**Protection Degree** : IP20

**Thermal Management** : Effective Heat Sinking, Ensure long life

**Surge Protection** : Upto 4KV

**Special Feature** : Over voltage protection , Short circuit protection , Open circuit protection

**BIS** : BIS approved driver IS 15885 (Part 2/Sec13) :2012 , R-84000787

**Lighting Angle** : 160° degree

## Technical Details :

Model No.	Rated Wattage	Nominal Voltage	Color	CRI	PF	THD	Lumen O/P
MLPL-SQ22S	22W	140V-285V	CW/WW/NW	>80	>0.95	<10%	2200 lm

## Dimensions :

Wattage	Size	Cut Out	Height
22W	225*225mm	200*200mm	14mm

