



*Light is life*

**LED**

CATALOGUE 2017

  
**murphy**<sup>®</sup>  
SINCE 1972

# Mare

LIGHT • LIFE • SAVINGS



## OUR STRENGTHS

- Complete in-house manufacturing facility
- Well equipped Lab and state-of-art R&D
- Complete in-house LED Driver Manufacturing
- More than 40,000 Sq Ft of Production Area
- Over 4 Decades of Experience in manufacturing of Lighting Items
- Wide Network of Authorized Distributors and Dealers
- OEM to leading Brands
- BIS approved Products

IS 16102 (PART1):  
2012



R-84000442

IS 10322 (PART5/SEC1):  
2012



R-84000639

# BRIGHTEN YOUR WORLD WITH US

With a glorious track record of over 4 decades, Murphy established a notable position in Lighting Industry. Since, the very beginning we have always been focused on superior customer experience through best in class products and service. At Murphy, we have had an eventful and rewarding journey in manufacturing of GLS bulb up to 1000 Watts, Reflector Bulbs, Medical Infrared Bulbs, Railway Lamps, Industrial Heating IR Radiation Lamps, HPSV Lamps, Mercury Lamps, Compact Fluorescent Lamps (CFL) and many more.

In 2009, Murphy has started manufacturing of high quality standard LED LIGHTS. With expertise in three core technologies – electronic design (LED Drivers), mechanical design (cooling devices) and optical design (lamp holders), Murphy LED Lighting products are more efficient (Lumen/W) and have a long life. The LED Drivers manufacturing measure up to high test quality standard suitable for Indian Power Supply. Murphy LED Lights are a smart innovation in the future of lighting. Their usage ranges from residential and retail to commercial and industrial applications.

Murphy derives its strength from its customers. The Growth of the latter is a prerequisite to the growth of the company and hence customer satisfaction is its prime objective. For that we have developed a state of art infra structural facility under the efficient guidance of our expert professional and qualified engineer with strong adherence to the quality management system.







# LED FLOOD LIGHT

The LED Flood Light range of compact floodlights are an economical replacement for traditional double-ended halogen-lamp floodlights. The combination of high-efficiency LEDs and a high-reflectivity optic ensures excellent light output for general purpose applications. A universal mounting bracket allows wall or surface mounting that tilts upwards or downwards.

## APPLICATIONS

- Architecture and landscape lighting
- Industrial warehouse lighting
- Facade lighting
- Billboard and Advertising lighting
- Security and parking area lighting





Model No.	Wattage	Dimension (mm)	Color	Lumen	PF	Std. Pack
MLAC-FL20	20W	180*140*110	CW/WW	2000	> 0.95	10 pc.



Model No.	Wattage	Dimension (mm)	Color	Lumen	PF	Std. Pack
MLAC-FL30	30W	225*185*115	CW/WW	3000	> 0.95	10 pc.



Model No.	Wattage	Dimension (mm)	Color	Lumen	PF	Std. Pack
MLAC-FL50	50W	255*185*125	CW/WW	5000	> 0.95	10 pc.



Model No.	Wattage	Dimension (mm)	Color	Lumen	PF	Std. Pack
MLAC-FL70	70W	310*235*160	CW/WW	7000	> 0.95	2 pc.
MLAC-FL90	90W	310*235*160	CW/WW	9000	> 0.95	2 pc.



Model No.	Wattage	Dimension (mm)	Color	Lumen	PF	Std. Pack
MLAC-FL100(COB)	100W	345*240*110	CW/WW	10000	> 0.95	2 pc.
MLAC-FL120	120W	345*240*110	CW/WW	12000	> 0.95	2 pc.



Model No.	Wattage	Dimension (mm)	Color	Lumen	PF	Std. Pack
MLAC-FL150	150W	435*295*122	CW/WW	15000	> 0.95	2 pc.
MLAC-FL150(COB)	150W	435*295*122	CW/WW	15000	> 0.95	2 pc.
MLAC-FL200	200W	435*295*122	CW/WW	20000	> 0.95	2 pc.



Model No.	Wattage	Dimension (mm)	Color	Lumen	PF	Std. Pack
MLAC-FL250	250W	620*310*170	CW/WW	25000	> 0.95	1 pc.
MLAC-FL300	300W	620*310*170	CW/WW	30000	> 0.95	1 pc.
MLAC-FL300(COB)	300W	620*310*170	CW/WW	30000	> 0.95	1 pc.
MLAC-FL350	350W	620*310*170	CW/WW	35000	> 0.95	1 pc.



**LED Luminous Efficiency**  
(120-140 Lm/Watt)



**Eco-friendly**



**Tested and Approved**



**Input Voltage**  
(160~280V AC 50Hz)



# LED STREET LIGHT

Our roads and streets are a vital part of the country's infrastructure, essential to support economic activity and people's movements. Our LED Street Light range reduce energy cost and environmental impact and more illuminating as compared to regular lights, without compromising the safety of road users.

## APPLICATIONS

- Street Lighting
- Campus and Garden Lighting
- Decorative Public Outdoor Lighting
- Parking Lots and Tunnels
- Public area lighting



Model No.	Wattage	Dimension (mm)	Color	Lumen	PF	Std. Pack
MLAC-SL15	15W	350*95*65	CW/WW	1500	> 0.95	10 pc.
MLAC-SL20	20W	350*95*65	CW/WW	2000	> 0.95	10 pc.



Model No.	Wattage	Dimension (mm)	Color	Lumen	PF	Std. Pack
MLAC-SL24	24W	410*115*70	CW/WW	2400	> 0.95	10 pc.



Model No.	Wattage	Dimension (mm)	Color	Lumen	PF	Std. Pack
MLAC-SL30	30W	385*135*60	CW/WW	3000	> 0.95	10 pc.



Model No.	Wattage	Dimension (mm)	Color	Lumen	PF	Std. Pack
MLAC-SL36	36W	375*155*53	CW/WW	3600	> 0.95	10 pc.



Model No.	Wattage	Dimension (mm)	Color	Lumen	PF	Std. Pack
MLAC-SL48	48W	390*186*80	CW/WW	4800	> 0.95	10 pc.



Model No.	Wattage	Dimension (mm)	Color	Lumen	PF	Std. Pack
MLAC-SL60	60W	455*200*60	CW/WW	6000	> 0.95	2 pc.
MLAC-SL75	75W	455*200*60	CW/WW	7500	> 0.95	2 pc.



Model No.	Wattage	Dimension (mm)	Color	Lumen	PF	Std. Pack
MLAC-SL90	90W	462*230*83	CW/WW	9000	> 0.95	2 pc.
MLAC-SL110	110W	462*230*83	CW/WW	11000	> 0.95	2 pc.



Model No.	Wattage	Dimension (mm)	Color	Lumen	PF	Std. Pack
MLAC-SL120	120W	515*260*73	CW/WW	12000	> 0.95	2 pc.
MLAC-SL150	150W	515*260*73	CW/WW	15000	> 0.95	2 pc.



**LED Luminous Efficiency**  
(120-140 Lm/Watt)



**Eco-friendly**

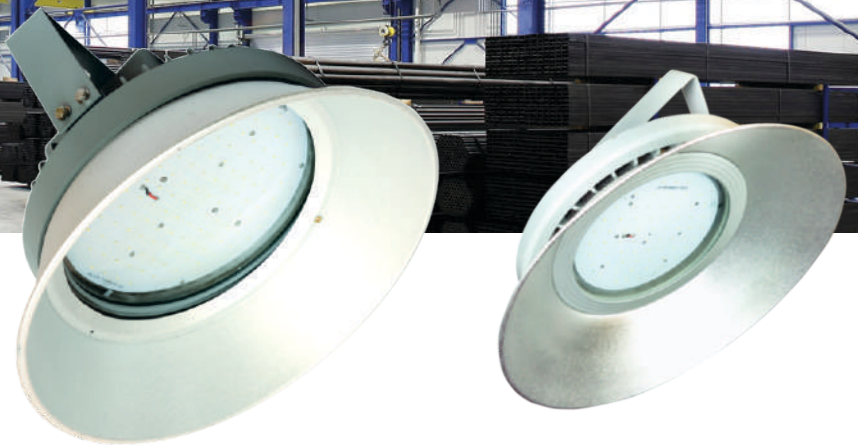


**Tested and Approved**



**Input Voltage**  
(160~280V AC 50Hz)





# LED HIGH BAY LIGHT

The High Bay Light is the new reliable LED lumina lighting solution for medium to high ceiling installation requirements in large consumer assembly areas and industrial facilities. Using state-of-the-art photometric designs and high power LED, the high system efficiency and liability is realized. It provides the best economical LED alternative to conventional 100W / 150W / 250W / 400W metal halide highway luminaries with excellent lighting performance and enhanced safety. With different choices of mounting methods, installations are easy and secure.

## APPLICATIONS

- Heavy and light industry production
- Assembly lines
- Warehouse & storage facilities
- Commercial assembly halls
- Loading areas
- Train & Airport station halls
- Mall & Supermarket
- Aircraft hangers



Model No.	Wattage	Dimension (mm)	Color	Base	Lumen	PF	Std. Pack
MLAC-HB25	25W	215*185	CW/WW	B22/E27	2500	> 0.95	10 pc.



Model No.	Wattage	Dimension (mm)	Color	Lumen	PF	Std. Pack
MLAC-HB75	75W	380*140	CW/WW	7500	> 0.95	2 pc.
MLAC-HB100	100W	380*140	CW/WW	10000	> 0.95	2 pc.



Model No.	Wattage	Dimension (mm)	Color	Lumen	PF	Std. Pack
MLAC-HB150	150W	430*160	CW/WW	15000	> 0.95	1 pc.
MLAC-HB200	200W	430*160	CW/WW	20000	> 0.95	1 pc.



**LED Luminous Efficiency**  
(120-140 Lm/Watt)



**Eco-friendly**



**Tested and Approved**



**Input Voltage**  
(160~280V AC 50Hz)





# LED PANEL LIGHT 1'x1' & 2'x2'

The Panel Light is designed with the customers' needs in mind. Customers want lighting solutions that provide comfortable, good quality light and significant energy as well as maintenance savings. Panel LED can be used for new functional lighting system installations or replacement of existing traditional luminaries. It is manufactured under advanced clean room production environment, with premium quality materials. High system efficiency and liability is assured. The wide selection of size configuration, promises easy design, installation and maintenance are a breeze.

## APPLICATIONS

- Offices
- Retail shops
- Recreational facilities
- Hospitals
- Banks & ATM outlets
- Airport lounges



## PANEL LIGHT – RECESS



Model No.	Wattage	Shape	Color	Size (mm)	Cut Out (mm)	Height (mm)	Lumen	PF	Std. Pack
ML-11-DL25R	25W	Square	CW/WW/NW	310*310	300*300	60	2500	> 0.9	10 pc.



Model No.	Wattage	Shape	Color	Size (mm)	Cut Out (mm)	Height (mm)	Lumen	PF	Std. Pack
ML-22-DL45R	45W	Square	CW/WW/NW	595*595	570*570	70	4500	> 0.9	10 pc.

## PANEL LIGHT – SURFACE



Model No.	Wattage	Shape	Color	Size (mm)	Height (mm)	Lumen	PF	Std. Pack
ML-22-DL45S	45W	Square	CW/WW/NW	590*590	70	4500	> 0.9	10 pc.



**LED Luminous Efficiency**  
(120-140 Lm/Watt)



**Eco-friendly**



**IP 20**

**Tested and  
Approved**



**Input Voltage**  
(160~280V AC 50Hz)



# LED SLIM PANEL LIGHT

The Slim Panel Light is characterized by a completely flat lens with a narrow flange, giving it an architecturally pleasing look. It is manufactured under advanced clean room production environment, with premium quality materials. High system efficiency and liability is assured. It is suitable for Surface Mounting and Recess Mounting both. The wide selection of size configuration, promises easy design, installation and maintenance are a breeze.

## APPLICATIONS

- Offices & Retail shops
- Recreational facilities
- Hospitals
- Banks & ATM outlets
- Airport lounges

## PANEL LIGHT ROUND – RECESS



Model No.	Wattage	Shape	Color	Size (mm)	Cut Out (mm)	Height (mm)	Lumen	PF	Std. Pack
MLPL-RD04R	4W	Round	CW/WW/NW	Ø85	Ø75	10	400	> 0.9	10 pc.
MLPL-RD09R	9W	Round	CW/WW/NW	Ø120	Ø108	10	900	> 0.9	10 pc.
MLPL-RD12R	12W	Round	CW/WW/NW	Ø150	Ø135	14	1200	> 0.9	10 pc.
MLPL-RD15R	15W	Round	CW/WW/NW	Ø171	Ø158	10	1500	> 0.9	10 pc.
MLPL-RD22R	22W	Round	CW/WW/NW	Ø220	Ø200	14	2200	> 0.9	10 pc.

## PANEL LIGHT SQUARE – RECESS



Model No.	Wattage	Shape	Color	Size (mm)	Cut Out (mm)	Height (mm)	Lumen	PF	Std. Pack
MLPL-SQ04R	4W	Square	CW/WW/NW	85*85	75*75	10	400	> 0.9	10 pc.
MLPL-SQ09R	9W	Square	CW/WW/NW	120*120	108*108	10	900	> 0.9	10 pc.
MLPL-SQ12R	12W	Square	CW/WW/NW	150*150	135*135	14	1200	> 0.9	10 pc.
MLPL-SQ15R	15W	Square	CW/WW/NW	171*171	158*158	10	1500	> 0.9	10 pc.
MLPL-SQ22R	22W	Square	CW/WW/NW	220*220	196*196	14	2200	> 0.9	10 pc.

## PANEL LIGHT ROUND – SURFACE



Model No.	Wattage	Shape	Color	Size (mm)	Height (mm)	Lumen	PF	Std. Pack
MLPL-RD04S	4W	Round	CW/WW/NW	Ø85	35	400	> 0.9	10 pc.
MLPL-RD09S	9W	Round	CW/WW/NW	Ø114	35	900	> 0.9	10 pc.
MLPL-RD15S	15W	Round	CW/WW/NW	Ø171	35	1500	> 0.9	10 pc.
MLPL-RD22S	22W	Round	CW/WW/NW	Ø220	35	2200	> 0.9	10 pc.

## PANEL LIGHT SQUARE – SURFACE



Model No.	Wattage	Shape	Color	Size (mm)	Height (mm)	Lumen	PF	Std. Pack
MLPL-SQ04S	4W	Square	CW/WW/NW	85*85	35	400	> 0.9	10 pc.
MLPL-SQ09S	9W	Square	CW/WW/NW	114*114	35	900	> 0.9	10 pc.
MLPL-SQ15S	15W	Square	CW/WW/NW	171*171	35	1500	> 0.9	10 pc.
MLPL-SQ22S	22W	Square	CW/WW/NW	220*220	35	2200	> 0.9	10 pc.



**LED Luminous Efficiency**  
(120-140 Lm/Watt)



**Eco-friendly**



**Tested and Approved**  
IP 20



**Input Voltage**  
(160~280V AC 50Hz)





# LED 2-IN-1 PANEL LIGHT

The 2-in-1 Panel Light is uniform panel glows by high luminousness reflector. Bright light is completely flat output. The luminous angle is wider. giving it an architecturally pleasing look. It is manufactured under advanced clean room production environment, with premium quality materials. It has Long life which reduces replacement expense. High system efficiency and liability is assured. These panels are energy efficiency, has high brightness and no IR, UV or other radiation. They are available in Surface Mounting and Recess Mounting both.

## APPLICATIONS

- Restaurant, Bars & Hotels
- Exhibition & Art Galleries
- Decorative Lighting
- Channel Letter Lighting
- Living & Bed Room
- Recreational facilities

## 2-IN-1 PANEL LIGHT – VENUS RECESS



Model No.	Wattage	Shape	Size (mm)	Cutout (mm)	Height (mm)	Color	PF	Std. Pack
MLPL-CCRR6	3+3W	Round	Ø105	Ø70	10	W+R/W+G/ W+B/W+WW	> 0.95	10 pc.
MLPL-CCRS6	3+3W	Square	105*105	70*70	10	W+R/W+G/ W+B/W+WW	> 0.95	10 pc.

## 2-IN-1 PANEL LIGHT – VENUS SURFACE



Model No.	Wattage	Shape	Size (mm)	Height (mm)	Color	PF	Std. Pack
MLPL-CCSR6	3+3W	Round	Ø105	35	W+R/W+G/ W+B/W+WW	> 0.95	10 pc.
MLPL-CCSS6	3+3W	Square	105*105	38	W+R/W+G/ W+B/W+WW	> 0.95	10 pc.

## 2-IN-1 PANEL LIGHT – BUBBLE RECESS



Model No.	Wattage	Shape	Size (mm)	Cutout (mm)	Height (mm)	Color	PF	Std. Pack
MLPL-BR6R	3+3W	Round	Ø105	Ø70	10	W+R/W+G/ W+B/W+WW	> 0.95	10 pc.
MLPL-BR6S	3+3W	Square	105*105	70*70	10	W+R/W+G/ W+B/W+WW	> 0.95	10 pc.

## 2-IN-1 PANEL LIGHT – PRIDE RECESS



Model No.	Wattage	Shape	Size (mm)	Cutout (mm)	Height (mm)	Color	PF	Std. Pack
MLPL-PR6R	3+3W	Round	Ø120	Ø70	10	W+R/W+G/ W+B/W+WW	> 0.95	10 pc.



**LED Luminous Efficiency**  
(120-140 Lm/Watt)



**Eco-friendly**



**Tested and  
Approved**



**Input Voltage**  
(160~280V AC 50Hz)



# LED COB DOWN LIGHT

The LED COB Down Light is a recessed-mounted LED spotlight for general orientation & SPOT illumination. This creates a natural lighting effect for use in general lighting applications. The special reflector replicates the halogen spot effect and increases concentration area which makes it a perfect replacement for traditional spotlights with reflector halogen lamps. Die-cast aluminum housing and high quality extrusion heat sink with external driver guarantees reliable performance even under high power operation. Choice of different wattages and beam angles give s much freedom to professional users. Long lifetime makes it an easy to use energy-saving replacement for traditional halogen spotlights & accentuates the space for new design too.

## APPLICATIONS

- Jewellery Display in Shop
- Offices
- Residential
- Hospitality & Retails Shops
- Restaurants
- All Washing Corridors
- Museums



## LED COB DOWN LIGHT - RECESS



Model No.	Wattage	Shape	Color	Size (mm)	Height (mm)	Lumen	PF	Std. Pack
MLDL-CB03R	3W	Round	CW/WW/NW/R/G/B	75	45	300	> 0.5	30x8 pc.
MLDL-CB10R	10W	Round	CW/WW/NW	85	70	1000	> 0.9	10 pc.
MLDL-CB15R	15W	Round	CW/WW/NW	110	95	1500	> 0.9	10 pc.
MLDL-CB25R	25W	Round	CW/WW/NW	140	115	2500	> 0.9	10 pc.

## LED COB DOWN LIGHT - SURFACE



Model No.	Wattage	Shape	Color	Size (mm)	Height (mm)	Lumen	PF	Std. Pack
MLDL-CB10S	10W	Round	CW/WW/NW	75	130	100	> 0.9	10 pc.
MLDL-CB20S	20W	Round	CW/WW/NW	100	140	200	> 0.9	10 pc.



**LED Luminous Efficiency**  
(120-140 Lm/Watt)



**Eco-friendly**



**Tested and Approved**



**Input Voltage**  
(160~280V AC 50Hz)



# LED TUBE LIGHT

Customers want lighting solutions that provide good quality of light and significant energy and maintenance savings. Whether it's for a new building system installation or renovation of an existing system, the LED Tube Light is your excellent choice. The new sturdy design ensures impact toughness and dust/water penetration protection. With its multi-purpose and compact design, the LED Tube Light can be used for both Indoor and Commercial applications.

## APPLICATIONS

- Heavy & Light Industry Production
- Parking • Recreational Facilities
- Assembly lines • Warehouse & Storage
- Loading areas • Offices & Malls
- Train & Airport Station Depot
- Sports Halls & Supermarket • Living Rooms

## LED T-5 TUBE LIGHT



Model No.	Wattage	Shape	Color	Size (ft)	Lumen	PF	Std. Pack
MLT5-BT06	6W	Batten	CW/WW/NW	1	600	> 0.95	48 pc.
MLT5-BT10	10W	Batten	CW/WW/NW	2	1000	> 0.95	24 pc.
MLT5-BT20	20W	Batten	CW/WW/NW	4	2000	> 0.95	20 pc.

## LED T-8 TUBE LIGHT



Model No.	Wattage	Shape	Color	Size (ft)	Lumen	PF	Std. Pack
MLT8-BT08	08W	Batten	CW/WW/NW	1	800	> 0.95	10 pc.
MLT8-BT26	26W	Batten	CW/WW/NW	4	2600	> 0.95	12 pc.
MLT8-BT40	40W	Batten	CW/WW/NW	4	4000	> 0.95	12 pc.



**LED Luminous Efficiency**  
(120-140 Lm/Watt)



**Eco-friendly**



**IP 20**

**Tested and  
Approved**



**Input Voltage**  
(160~280V AC 50Hz)





# LED BULBS

With a look that is very similar to traditional filament bulbs or CFL, our LED Glass Bulbs are an instant replacements for them, as they fit into the same socket and need no further reconfiguration-while giving you regular brightness at a fraction of the wattage consumed. They have omni directional illumination with lower consumption of power.

## APPLICATIONS

- Offices
- Malls
- Showrooms
- Residential
- Decorations



## LED STD BULB SERIES



Model No.	Wattage	Dimensions (mm)	Color	Base	Lumen	Angle	PF	Std. Pack
MLBL-ST2.5	2.5W	DIA-50, H-80	CW/WW/R/G/B	B22/E27	250	180	NA	40X8 pc.
MLBL-ST03	3W	DIA-50, H-95	CW/WW/R/G/B	B22/E27	300	270	> 0.9	40X8 pc.
MLBL-ST05	5W	DIA-60, H-100	CW/WW	B22/E27	500	180	> 0.9	10X6 pc.
MLBL-ST07	7W	DIA-56, H-100	CW/WW	B22/E27	700	180	> 0.9	10X6 pc.
MLBL-ST09	9W	DIA-60, H-95	CW/WW	B22/E27	900	180	> 0.9	10X6 pc.
MLBL-ST12	12W	DIA-65, H-112	CW/WW	B22/E27	1200	180	> 0.9	10X6 pc.
MLBL-ST15	15W	DIA-70, H-130	CW/WW	B22/E27	1500	180	> 0.9	10X6 pc.
MLBL-ST20	20W	DIA-75, H-135	CW/WW	B22/E27	2000	180	> 0.9	10X6 pc.

## LED CANDLE BULB



Model No.	Wattage	Shape	Dimensions (mm)	Color	Base	Lumen	Std. Pack
MLBL-CL3	3W	CANDLE	DIA-35	CW/WW/NW	E14	300	10X6 pc.

## LED DECO & MINI BULB SERIES



Model No.	Wattage	Shape	Dimensions (mm)	Color	Base	Lumen	Std. Pack
MLBL-MN0.5D	0.5W DECO	ROUND PVC	DIA-45	CW/WW/R/G/B	B22	50	10X20 pc.
MLBL-MN01	1W	ROUND/PYGMY	DIA-35	CW/WW/R/G/B	B22/E27/E14	100	25X4 pc.
MLBL-MN02	2W	ROUND	DIA-35	CW/WW	B22/E27/E14	200	25X4 pc.

## LED ROCKET BULB SERIES



Model No.	Wattage	Shape	Dimensions (mm)	Color	Base	Lumen	Std. Pack
MLBL-RK30	30W	ROCKET	DIA-80, H-185	CW/WW	B22/E27	3000	1 pc.
MLBL-RK40	40W	ROCKET	DIA-100, H-217	CW/WW	B22/E27	4000	1 pc.
MLBL-RK50	50W	ROCKET	DIA-100, H-227	CW/WW	B22/E27	5000	1 pc.



**LED Luminous Efficiency**  
(120-140 Lm/Watt)



**Eco-friendly**



**IP 20**

**Tested and Approved**



**Input Voltage**  
(160~280V AC 50Hz)



# LED DOWN LIGHT

The LED Down Light is a general light, recessed-mounted LED down light for general illumination. The down light creates a natural lighting effect for use in general lighting applications. The design replicates the soft & even spread / effect and increases general work efficiency, which makes it a perfect replacement for traditional CFL fixtures with reflections. Design is optimized to give desired illumination levels & with an inbuilt driver it guarantees reliable performance even under high power operation. Choices of different wattages give ample freedom to consumer & semi-professional users. The standard cut out makes it an easy to use energy-saving replacement for traditional CFL Down Lights.

## APPLICATIONS

- General Illumination
- Offices
- Residential
- Hospitality
- Retail shops
- Staircases & Corridors
- Banks & ATM outlets

## LED AURA



Model No.	Wattage	Shape	Size (mm)	Cut Out (mm)	Color	Lumen	PF	Std. Pack
MLDL-AR06R	6W	Round	110	80	CW/WW	600	> 0.9	20X1 pc.
MLDL-AR06S	6W	Square	110	80	CW/WW	600	> 0.9	20X1 pc.

## LED CBL



Model No.	Wattage	Shape	Size (mm)	Cut Out (mm)	Color	Lumen	PF	Std. Pack
MLDL-CBL03	3W	Round	115	75	CW/WW/R/G/B	300	NA	20X4 pc.
MLDL-CBL05	5W	Round	115	75	CW/WW	500	NA	20X4 pc.

## LED DEEP DOWN LIGHT



Model No.	Wattage	Shape	Size (mm)	Cut Out (mm)	Color	Lumen	PF	Std. Pack
MLDL-DDL12W	12W	Round	150	115	CW/WW/NW	1500	> 0.9	24 pc.
MLDL-DDL18W	18W	Round	200	160	CW/WW/NW	2000	> 0.9	20 pc.



**LED Luminous Efficiency**  
(120-140 Lm/Watt)



**Eco-friendly**



**Tested and Approved**



**Input Voltage**  
(160~280V AC 50Hz)



# LED JUNCTION BOX LIGHT

Eliminate the need for recessed cans with an LED downlight that encompasses the features of retrofit lights but require no assembly. These Junction Box downlights come ready to go right out of the box! Simply connect the junction box wiring to your light switch and place it into your ceiling.

## APPLICATIONS

- Offices
- Hospitality
- Banks & ATM outlets
- Staircases & Corridors
- Residential
- Retail shops
- Restaurants
- General Illumination

## LED GENIE



Model No.	Wattage	Shape	Size (mm)	Cut Out (mm)	Color	Lumen	PF	Std. Pack
MLDL-GN03	3W	Round	75	45	CW/WW/R/G/B	300	>0.9	30X8 pc.

## AURA DEEP



Model No.	Wattage	Shape	Size (mm)	Cut Out (mm)	Height (mm)	Color	Lumen	PF	Std. Pack
MLDL-AR03	3W	Round	80	45	45	CW/WW/R/G/B	300	>0.9	30X8 pc.

## LED JBL



Model No.	Wattage	Shape	Size (mm)	Height (mm)	Color	Lumen	PF	Std. Pack
MLDL-JB03	3W	Round	80	30	CW/WW/R/G/B	300	NA	30X8 pc.



**LED Luminous Efficiency**  
(120-140 Lm/Watt)



**Eco-friendly**



**IP 20**

**Tested and Approved**



**Input Voltage**  
(160~280V AC 50Hz)





# LED SPOTLIGHT

LED Spot Lights are ideal for replacing conventional spot lights and provide accent lighting for a variety of applications. Easy to install, these products come with suitable mounting options like spike, clips & surface mounting. The luminaire has a long life span of 25000 burning hours, which comes with integrated driver which makes it easy to install and maintain

## APPLICATIONS

- Showrooms
- Hotels
- Art Galleries
- Product Display
- Exhibitions

## LED EYEBALL



Model No.	Wattage	Shape	Size (mm)	Cut Out (mm)	Color	Lumen	PF	Std. Pack
MLDL-EB02	2W	Round	65	40	CW/WW/R/G/B	200	>0.5	40X8 pc.

## LED BUTTON



Model No.	Wattage	Shape	Size (mm)	Cut Out (mm)	Color	Lumen	PF	Std. Pack
MLDL-BT02	2W	Round	31	25	CW/WW/R/G/B	200	>0.5	40X8 pc.



**LED Luminous Efficiency**  
(120-140 Lm/Watt)



**Eco-friendly**



**IP 20**

**Tested and Approved**



**Input Voltage**  
(160~280V AC 50Hz)



# LED UNIVERSAL LIGHT

LED Universal Lights are used to fulfill different requirements, that's why offer LED Down Light UCL. These UCLs have excellent thermal management. It delivers optimal heat dissipation and life span of LED.

## APPLICATIONS

- Offices
- Hospitality
- Banks & ATM outlets
- Staircases & Corridors
- Residential
- Retail shops
- Restaurants
- General Illumination



Model No.	Wattage	Shape	Size (mm)	Cut Out (mm)	Color	Lumen	PF	Std. Pack
MLDL-UCL03	3W	Round	115	45	CW/WW/R/G/B	300	NA	30X4 pc.
MLDL-UCL05	5W	Round	115	45	CW/WW	500	NA	30X4 pc.
MLDL-UCL05B	5W	Round	170	50	CW/WW/R/G/B	300	NA	30X4 pc.
MLDL-UCL10	10W	Round	170	50	CW/WW/R/G/B	500	>0.9	20X3 pc.



**LED Luminous Efficiency**  
(120-140 Lm/Watt)



**Eco-friendly**



**Tested and Approved**



**Input Voltage**  
(160~280V AC 50Hz)





# LED SURFACE LIGHT

An extensive range of LED Slim Ceiling Surface Light. In addition, we present these cabins in varied sizes and designs. They can be easily installed on any wall-type considering its high-efficiency & low maintenance cost.

## LED FLARE SURFACE



Model No.	Wattage	Shape	Size (mm)	Height (mm)	Color	Lumen	PF	Std. Pack
MLDL-FL03W	3W	Square	82	30	CW/WW/R/G/B	300	NA	30X8 pc.

## LED HANDI ORBIT SURFACE



Model No.	Wattage	Shape	Size (mm)	Height (mm)	Color	Lumen	PF	Std. Pack
MLDL-OB05W	5W	Round	210	88	CW/WW/R/G/B	500	NA	20 pc.
MLDL-OB10W	10W	Round	210	88	CW/WW/R/G/B	1000	NA	20 pc.

## LED CAB LITE SURFACE



Model No.	Wattage	Shape	Size (mm)	Height (mm)	Color	Lumen	PF	Std. Pack
MLDL-CB03	3W	Round	65	13	CW/WW	300	>0.9	30X8 pc.



**LED Luminous Efficiency**  
(120-140 Lm/Watt)



**Eco-friendly**



**Tested and Approved**



**Input Voltage**  
(160~280V AC 50Hz)





# MEDICAL IR LAMP

- Watt: 150 w
- Voltage: 250 V
- Base: B-22/3Pin/E27
- Standard Packaging: 12 Pcs.



## REPORTED BENEFITS AND EFFECTS

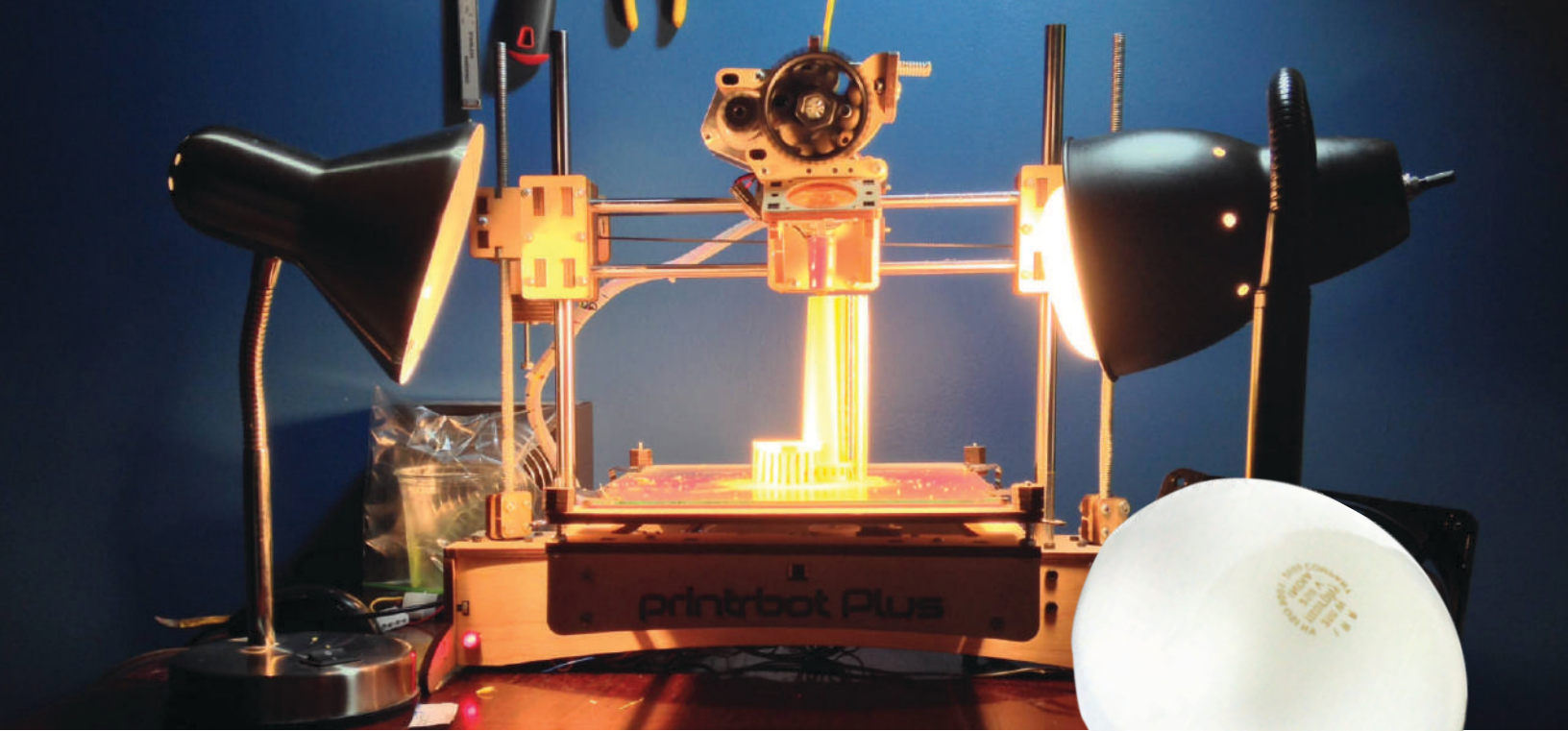
- Encourages the regeneration of cells.
- Mild heating has an analgesic effect on the superficial sensory nerve endings in the skin, relieving pain.
- Increases body temperature as local heat spreads to surrounding tissues.
- Stimulates the sweat glands, improving the elimination of waste and as a result the cleansing of the skin.
- Prepares the client for further treatment.
- Nourishes the skin through the application and absorption of a product.
- Penetrates deep into the subcutaneous layer helping the dispersal of fatty tissue.
- A redness of the skin is may be produced. (Will fade within a few hours)
- Relaxes the muscles and relieves tension.

## APPLICATIONS

- Aching Muscles - Murphy Infrared helps to remove pain completely, it is recommended to use daily till pain disappears.
- Backache - Murphy Infrared gives quick relief in backache. In case of chronic problem, it is advisable to consult your doctor.
- Bruises and Sprains - In the case of accidents, use Murphy Infrared after 12 hrs. of accident, it helps to improve blood circulation resulting in to faster healing & quick relief from pain.
- Rheumatic pain - Most common problem specially in old age, one can feel the difference after using Murphy Infrared, as it gives quick relief from pain.

## OTHER WIDE APPLICATIONS

Such as relief from pain & infection of wound, Infrared skin, Boil, teeth extraction, Insect bites. Also useful in Loss of hair, Massage, Beauty treatment & various treatments for pet animals.



# IRR LAMP & REFLECTOR LAMPS



- Watt: 40W, 60W, 100W, 150W
- Voltage: 250 V • Base: B-22d • Beam Spread: 30°
- Watt: 250 w • Voltage: 250 V
- Base: E-27 • Standard Packaging: 9

- Metal Working Industry: Partial heating, shrink fits, drying lacquer and paint baking.
- Plastic Working Industry: Heating prior to information of vacuum, prior to bending sheets tubes, shrinking foils, melting plastic powders for coating metals.
- Electro Technical Industry: Heating insulating- boards strips prior to cutting strips, embossing products, drying impregnated electric-motors parts windings, drying lacquer on transformer sheets windings.
- Paper Industry: Heating web on paper machines drying glue on paper sheet covered with metal plastic oil, drying coating on peper.
- Furniture Industry: Hardening single component polyster on active base-coat on (veneered) chipboard.
- Packing Industry: Heating plastic shrinking foils drying glue on paper plastics.
- Bicycle, Scooter Industry: Baking paint.
- Leather Industry: Drying leather skins.
- Laboratories mechanization sections distillation dehydration of substances heat test in industrial laboratories.
- Textile Industry: Drying sized yarns, drying fabrics. Carbonization woolen cloth setting synthetic fibers/cloth, jelling PVC.
- Printing Press: Drying printing ink, varnish, glue.
- Food Industry: Baking and drying biscuit, milk powder, baby food, chocolate, etc.
- Foundry: core & mould heating.
- Tea Industry: To warm rollers of Fiber-Extraction.
- Agricultural
- Personal Care
- Poultry Farms



# CERTIFICATES



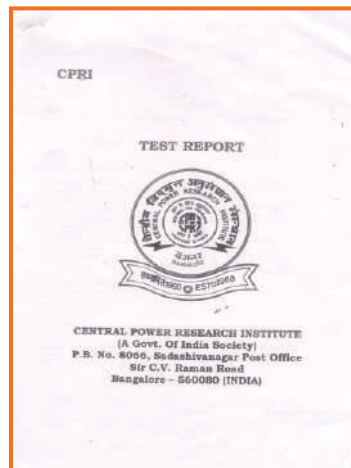
ISO



CE



ROHS



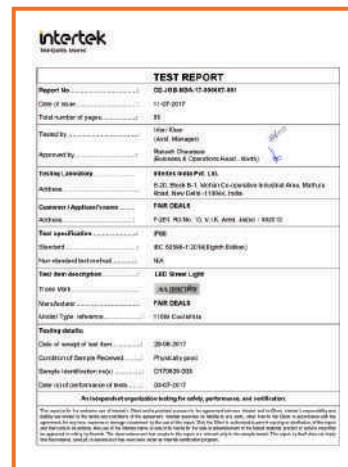
MNRE



IS 16102 (PART 1): 2012



IS 10322 (PART 5/SEC 1): 2012



IP66





44 Years of  
Trust



Most Power  
Efficient



Long Life  
Guaranteed



## FAIRDEALS

Regd. Office: F-261, Road No.13, V.K.I Area, Jaipur-302013  
Phone: +91-141-2330196, 4042009 | E-mail: [info@murphylightings.com](mailto:info@murphylightings.com)  
Website: [www.murphylightings.com](http://www.murphylightings.com)